

# Riverside News

July 20, 2011  
Issue 11



Tulsa Police Department  
Riverside Division  
7515 Riverside DR  
Tulsa, Ok 74136  
(918) 596-1100

Division Commander  
Major Julie Harris

Day Shift Commander  
Capt. Richard Alexander

Evening Shift Commander  
Capt. Brad Clark

Midnight Shift Commander  
Capt. Travis Yates

Questions or Comments

Email:  
[TPD Riverside News](mailto:TPDRiversideNews@cityoftulsa.org)  
TPDRiversideNews@cityoftulsa.org

Visit us on the web.

[Tulsa Police Department](http://www.tulsapolice.org)  
www.tulsapolice.org

[TPD on Facebook](#)

[TPD on Twitter](#)

Crime Stoppers (918) 596-COPS

Detective Division (918) 596-9133

Gilcrease Division (918) 591-4100

Mingo Valley  
Division (918) 669-6000

Property Room (918) 596-9355

Records (918) 596-9286

Special Operations (918) 669-6861

Special  
Investigations (918) 669-6068

## Call 2-1-1 for Help?

2-1-1 is a free and easy-to-remember phone number that you can dial to access information and referrals to social services and community-based programs. Available services include assistance with housing, financial needs, medical and dental needs, and counseling.

You can dial 2-1-1 for help 24 hours a day, everyday. A trained service specialist will help link you with the services you need. Bilingual service specialists and interpreter services are available to accommodate virtually any language.

*(Continued on Page 2)*

## **BOLO...BOLO...BOLO...**



Not actual suspect vehicle

**Green Toyota Tercel 2-Door  
Okla. Tag 372-EUG**

July 11<sup>th</sup> – Suspects in this vehicle burglarized a home near 4600 S 27<sup>th</sup> West Ave. They pried the back door open to make entry. Loss was electronics. Suspects:  
#1 black male 16-20 years  
5'3" -5'8" 140 lbs.  
#2 black male 16-25 years  
5'3" -5'8" 140 lbs.  
#3 black male 16-25 years  
5'3" -5'11" 150 lbs.

## Crime Tips

Never pick up hitchhikers.

If your car breaks down, put the hood up, lock the doors, turn on the flashers. Do not leave your car. If someone stops to help, roll down the window slightly and ask them to call the police or a tow truck.

## From the Major's Desk...

Burglaries continue to be the number one crime affecting our Riverside residents. One of the best deterrents is being a "nosy neighbor." Please help each other by reporting suspicious activity in your neighborhoods and apartment complexes. Get a good suspect description. And, if you are able, a good vehicle description too.

## Call 2-1-1 for Help? (Continued from Page 1)

2-1-1 makes it easier for people to search for emergency assistance, food or shelter. Many times people have trouble accessing the services they need because they don't know who or where to call. During community emergencies, Oklahomans have one number to call to receive accurate information about open shelters, where to apply for benefits or how to give help.

2-1-1 Helpline has over 2,650 agencies listed in its resource database. They are primarily private non-profit, faith-based non-profit, or public (government) agencies. In some cases, for-profit agencies are listed if they provide a critical service not readily available through non-profit or public agencies.

The agencies to which 2-1-1 makes referrals provide services such as:

- Child care services
- Clothing
- Counseling
- Crisis intervention
- Disability services
- Domestic violence services
- Food
- Health care
- Housing
- Job placement
- Legal assistance
- Rent assistance
- Senior services
- Utility assistance
- Volunteer opportunities

For a list of referral agencies, go to the 2-1-1 webpage.

[http://www.211tulsa.org/WTGFH\\_FullPage.pdf](http://www.211tulsa.org/WTGFH_FullPage.pdf)

### Have a question?

Send us your question at [TPD Riverside News](#)  
We'll answer in an upcoming newsletter.

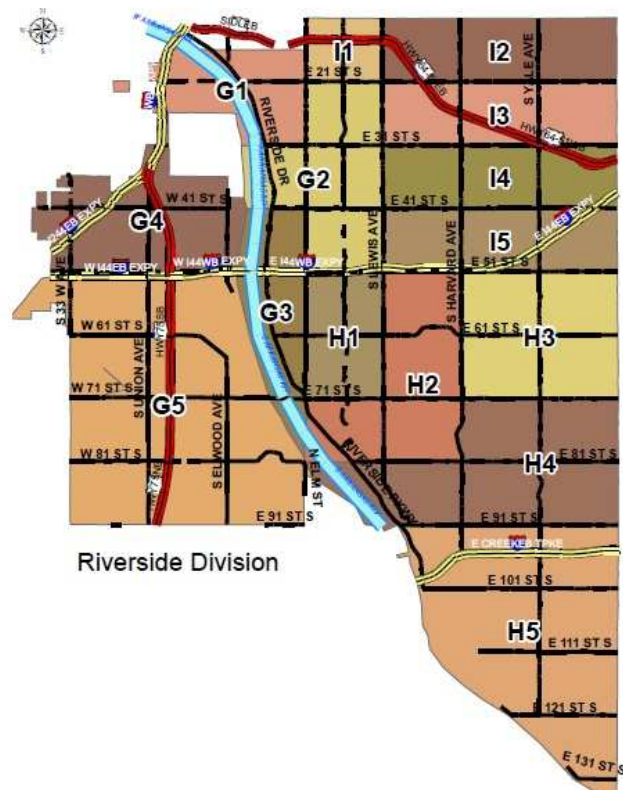
Q: Do TPD officers patrol alone or with partners?

A: Generally, TPD officers patrol solo in cars. Backup officers respond in separate patrol cars. Soon, you may see two officers in a car as our recruit officers graduate from the Academy and begin field training.

*Find your beat* →

The Riverside Division covers a large portion of south and west Tulsa. Generally, we serve citizens south of 11th Street and west of Sheridan Road to the city limits.

George, Henry and Ida are the names of the 3 squad areas in the Division. Each squad contains 5 beats.



# Crime Bulletin

## Homicide

Most homicides in Tulsa have nothing to do with the average citizen of Tulsa. Usually, homicide victims have some relationship to their killer.

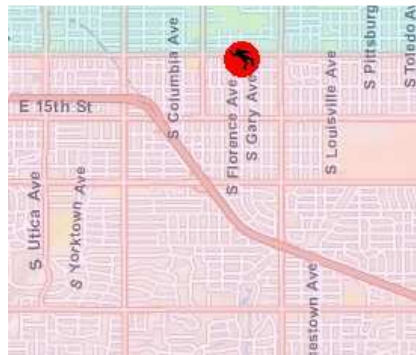
## Sexual Assault

Sexual assaults committed by strangers are rare. Most sexual assaults involve domestic or acquaintance situations. To protect the privacy of victims, only sexual assault by stranger information will be provided.

## Robbery

Robbery is the taking of property from a person or business where force or fear is used. Weapons may or may not be involved.

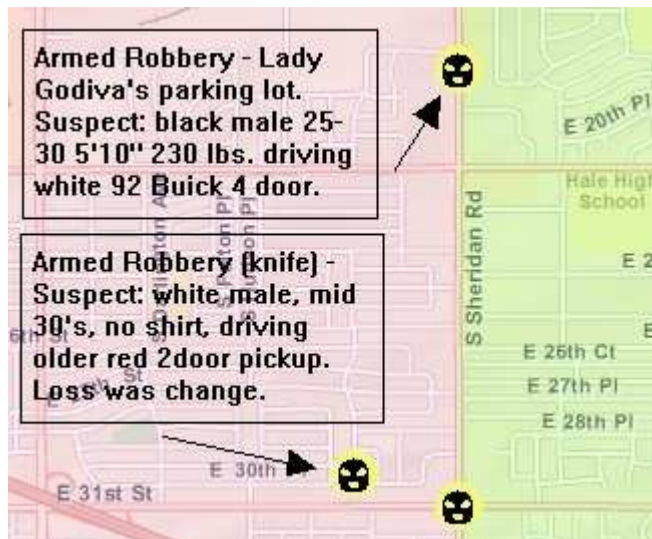
### 1 Homicide in the Riverside Division last week



Victim was discovered in his residence near 1100 South Florence Ave. Victim suffered numerous stab wounds. Investigation continues.

### No Stranger Sexual Assaults in the Riverside Division last week

### 4 Individual Robberies in the Riverside Division last week



31<sup>st</sup> and Sheridan – Suspect were 3 black males on mountain bikes. Loss was a mountain bike and cash.

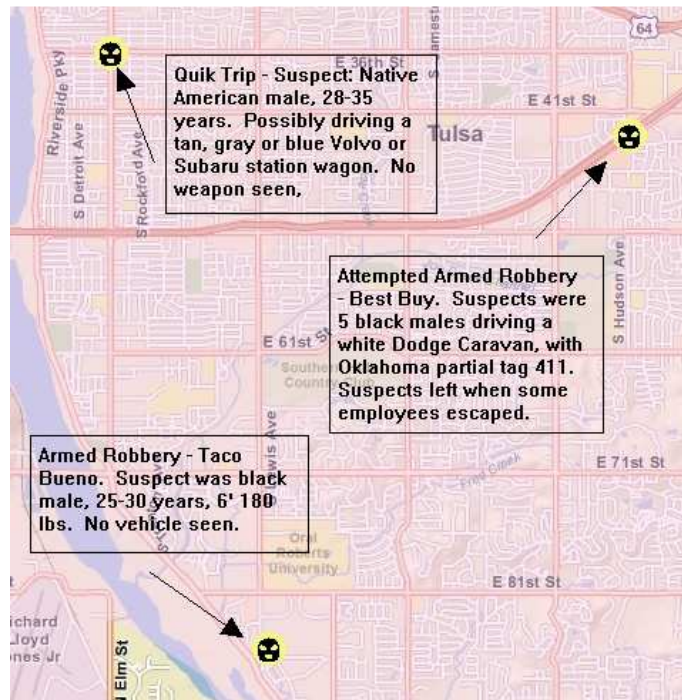
6400 S Peoria (not mapped) – One brother robbed another brother of his cell phone.

# Crime Bulletin

Home Invasion robberies are almost always related to drug dealing, gambling, or certain knowledge of money in the home.

**No Home Invasion Robberies in the Riverside Division last week**

## 4 Commercial Robberies in the Riverside Division last week



We will report Commercial and Individual Robberies to you separately.

Attempted Armed Robbery at Everyone's Cash, 1423 W 51<sup>st</sup> (not mapped). Suspect was black male wearing all blue, with panty hose over face. No loss.

# Crime Bulletin

Burglary is the breaking and entry into homes, businesses, and other structures for the purpose of committing a crime.

Residential burglaries usually occur in the daytime when most residents are not home. Most burglars do not want to confront someone in the home. The most common tactic is to knock and see if someone answers the door. The suspect asks for directions or a non-existent person. If no one answers, the burglar breaks into the home.

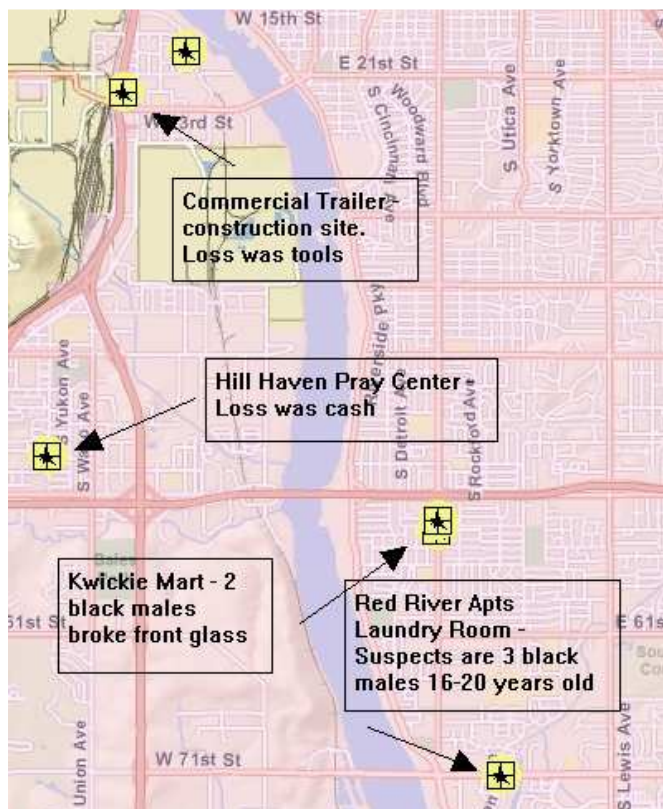
Commercial burglaries generally occur when businesses are closed, at night or on weekends and holidays.

## 45 Residential Burglaries in the Riverside Division last week

We had a substantial number of residential burglaries last week. We also received quite a bit of suspect information from witnesses.

See page 8 for a map of the residential burglaries and the information we have about them.

## 6 Commercial Burglaries in the Riverside Division last week

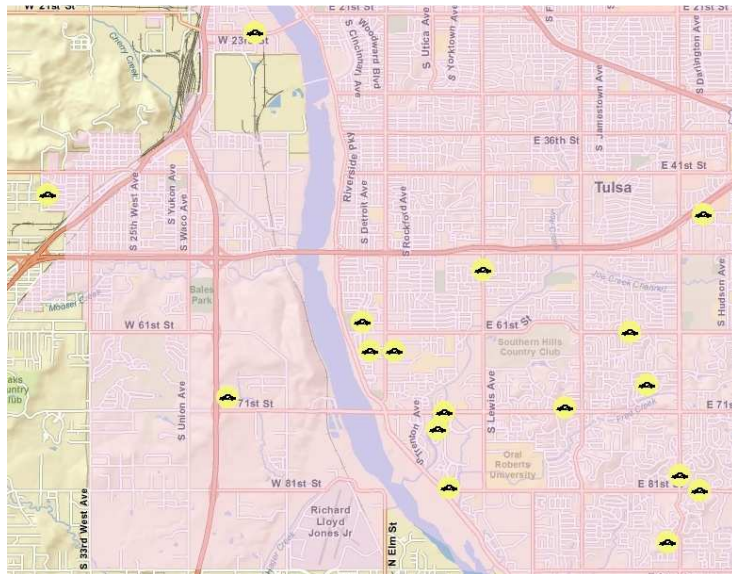


# Crime Bulletin

Auto Theft is the larceny of vehicles as well as heavy equipment such as bulldozers.

We also include recovery of vehicles in the Division that were stolen outside of Tulsa.

## 18 Auto Thefts in the Riverside Division last week



1 theft was domestic related. Keys were in 4 of the stolen vehicles.

## Introducing Officer Jim Isgrig



July 16th marked my 29th year on the Department. I have worked all over town and find I love patrol the best. My favorite thing to do at work is to catch burglars and I have numerous commendations for doing so. I have the Medal of Valor, the Life Saving Award and two Department

*(Continued on Page 7)*

## Catch of the Day...



Grant Anderson



Alex Bland

July 14<sup>th</sup> at 4:00 am – Officers were dispatched to an auto theft just occurred near 4700 East 87<sup>th</sup> St. When officers arrived, they learned Onstar tracked the vehicle to the area of 2500 East 88<sup>th</sup> St. Officers went to this location where they located suspects Grant Anderson and Alex Bland standing near the stolen vehicle. Officers found evidence linking these suspect to this stolen vehicle and two others. Both were booked into jail.

## Upcoming Events

### July 22<sup>nd</sup>

Tatur's Reckless Redneck Run  
Turkey Mountain  
Street Closings: West 61<sup>st</sup> – Hwy 75 to Elwood,  
Elwood – 61<sup>st</sup> to 71<sup>st</sup>  
July 22<sup>nd</sup> 6:30 pm to 7:30 pm

### July 24<sup>th</sup>

Chris Brown Tulsa Duathlon  
Riverparks West and Riverside Drive  
Street Closings: Jackson Ave – 21<sup>st</sup> to 23<sup>rd</sup>, 23<sup>rd</sup>  
Street Bridge, Riverside Dr. – 11<sup>th</sup> to 51<sup>st</sup>  
July 24<sup>th</sup> 7:00 am to 11:00 am

### Aug 27<sup>th</sup>

Alzheimer's Run  
ORU Campus and neighborhood northeast  
Evanston – 75<sup>th</sup> to 76<sup>th</sup>, 75<sup>th</sup> – Evanston to  
College, 75<sup>th</sup> – Evanston to College, 76<sup>th</sup> –  
Evanston to College, College – 75<sup>th</sup> to 76<sup>th</sup>  
Aug 27<sup>th</sup> 8:00 am to 9:00 am

### Oct 14<sup>th</sup>

Octoberfest Run  
Monte Cassino School  
Street Closing: Yorktown – Just south of 21<sup>st</sup> to  
Forest Blvd.  
Oct 14<sup>th</sup> 8:15am to 10:00 am

### Oct 15<sup>th</sup>

JDRF Walk to Cure Diabetes  
OU Schusterman Center  
Street Closings: Eastbound 41<sup>st</sup> – Toledo to  
Yale, Sandusky Ave. – 41<sup>st</sup> to 45<sup>th</sup>, 45<sup>th</sup> –  
Sandusky to Yale, Outside lane southbound  
Yale – 43<sup>rd</sup> to 44<sup>th</sup>  
Oct 15<sup>th</sup> 9:30 to 10:30

---

### **Officer Isgrig** *(Continued from Page 6)*

Commendation Awards.

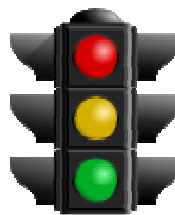
When not at work you can sometimes find me around town playing drums in various local bands. I came to Tulsa to spend two years here for the experience and then move on. Instead I fell in love with Tulsa and have been here 29 years. I think Tulsa is one of the best "Big Towns" in America.

## Felony or Misdemeanor?

Oklahoma State Law defines crimes as either felony or misdemeanor. A felony is a crime punishable by death or imprisonment in the penitentiary. Every other crime is a misdemeanor. A misdemeanor is punishable by imprisonment in the County Jail not exceeding one year or by a fine not exceeding \$500, or both.

Some crimes may be felony or misdemeanor. For example, Driving Under the Influence (DUI) is a misdemeanor on the first offense. Conviction of a second DUI within ten years of the first conviction is a felony.

All violations of City ordinance are misdemeanor crimes. Violations of City ordinance are punishable by imprisonment in the City Jail for up to 90 days or by fine of up to \$500, or both.



### The Traffic Signal

Information from the  
Riverside Traffic Unit

### **AVOIDING A TRAFFIC CONTROL DEVICE**

No person shall drive through a service station driveway, other driveway or private property so as to avoid use of a street or traffic control device.

Violation of this ordinance could result in a \$150 fine.

