

Riverside News

November 23,
2011
Issue 26



Tulsa Police Department
Riverside Division
7515 Riverside DR
Tulsa, Ok 74136
(918) 596-1100

Division Commander
Major Julie Harris

Day Shift Commander
Capt. Richard Alexander

Evening Shift Commander
Capt. Brad Clark

Midnight Shift Commander
Capt. Travis Yates

Questions or Comments

Email:
[TPD Riverside News](mailto:TPDRiversideNews@cityoftulsa.org)
TPDRiversideNews@cityoftulsa.org

Visit us on the web.

[Tulsa Police Department](http://www.tulsapolice.org)
www.tulsapolice.org

[TPD on Facebook](#)

[TPD on Twitter](#)

Crime Stoppers (918) 596-COPS

Detective Division (918) 596-9133

Gilcrease Division (918) 591-4100

Mingo Valley
Division (918) 669-6000

Property Room (918) 596-9355

Records (918) 596-9286

Special Operations (918) 669-6861

Special
Investigations (918) 669-6068

The Shopping Season is Upon Us

Ready or not the holiday season has started. The Riverside Division will have extra patrols in and around our area shopping malls. Some of these officers will intentionally be very visible. Other officers will be in plain clothes driving unmarked vehicles. Our goal is to help keep you safe.

Criminals will not take a holiday. Quite the contrary, the holiday shopping season is a time of increased criminal activity.

Auto thefts are a problem as the weather gets colder. Why? People leave their cars running to warm up on cold days. Thieves watch for the telltale sight and sound of an unoccupied vehicle in residential driveways or parked at convenience stores. It only takes seconds for a thief to take your car. **Don't leave your car running if no one is in it!**

As you head out to shop, be aware of your surroundings. Minimize shopping at night or alone. You are more susceptible to being victimized at night or while alone. Avoid parking next to large vehicles that conceal view of your vehicle.

Be extra careful when carrying a wallet or purse. Only carry what you absolutely need in them. They are prime targets for purse snatchers on

(Continued on Page 2)

The Shopping Season is Upon Us (Continued from Page 1)

parking lots.

Avoid carrying large amounts of cash. Take only the cash you need or pay with a credit card. Carry only the credit cards you will need. Keep a record of all your credit card numbers at home in a safe location. Report lost or stolen credit cards immediately.

If you use an ATM, only withdraw the amount of cash that you will need for that day. Protect your PIN from the view of other people near the ATM.

At a drive-up ATM, keep all windows closed except the one you are using, and all vehicle doors locked. Keep the vehicle running and watch the vehicle's front, rear, and sides. If someone approaches your vehicle on foot, cancel the transaction and leave.

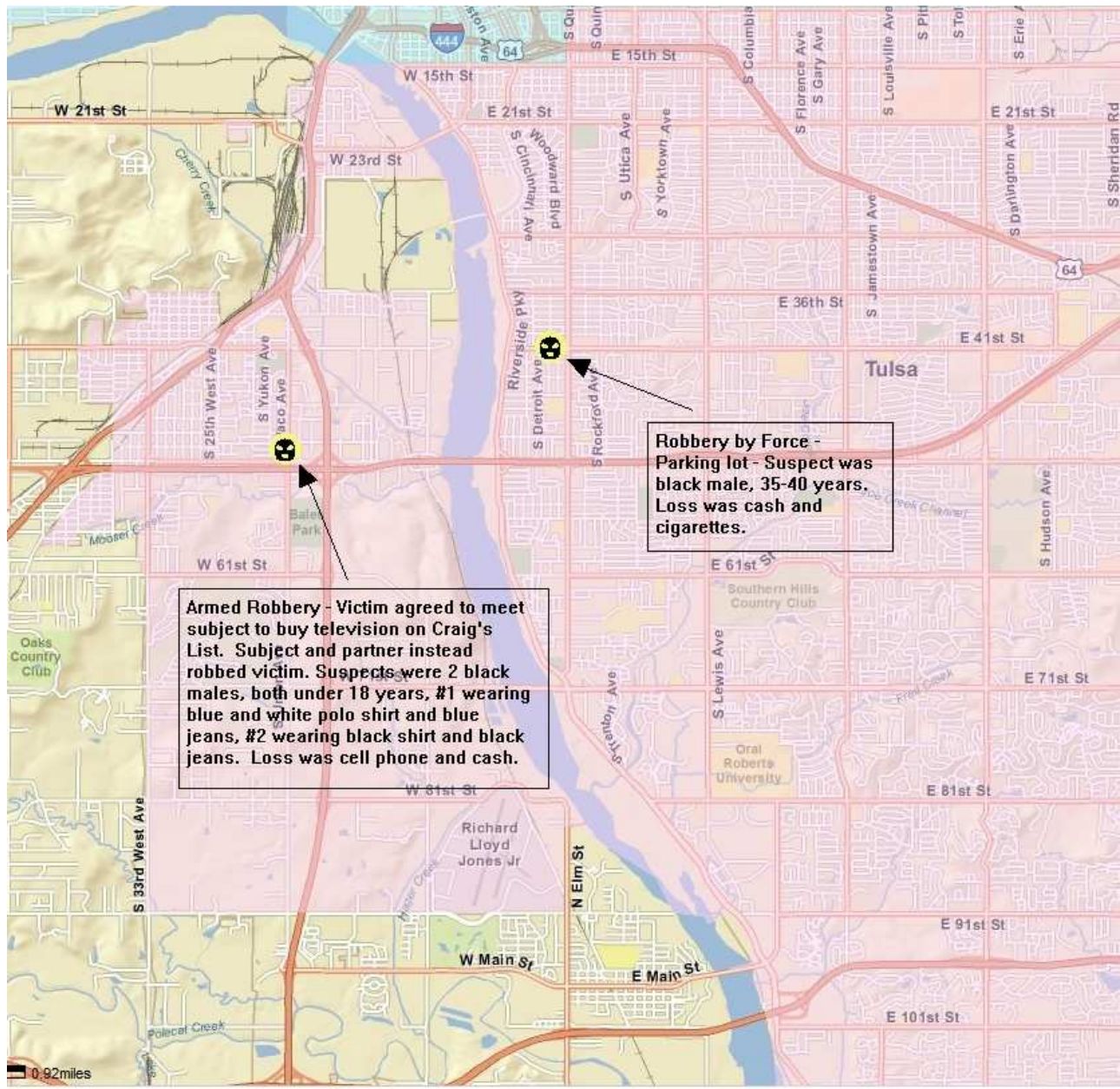
Riverside Division Toy Drive

We are again collecting toys for the children of needy families. You can drop off toys at Riverside Division, 7515 Riverside Drive, Monday through Friday, 8 am – 4 pm. (Call 918-576-5300 for after hours pickup by patrol officers.)

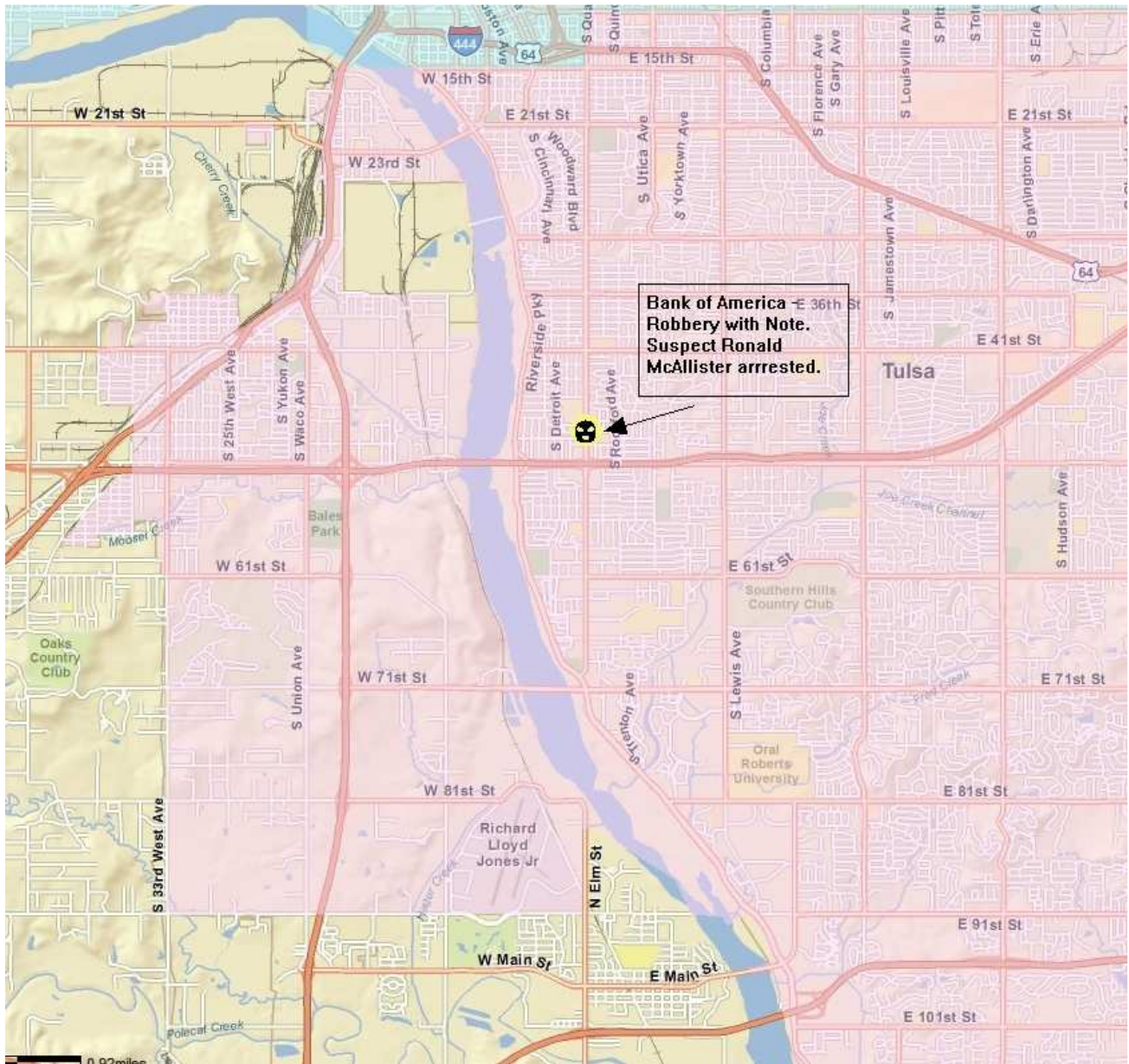
You can nominate a needy family by calling 918-576-5300. Our ability to provide toys to those nominated depends on the quantity of toys collected.

Toys will be hand delivered by Riverside Division officers during the week

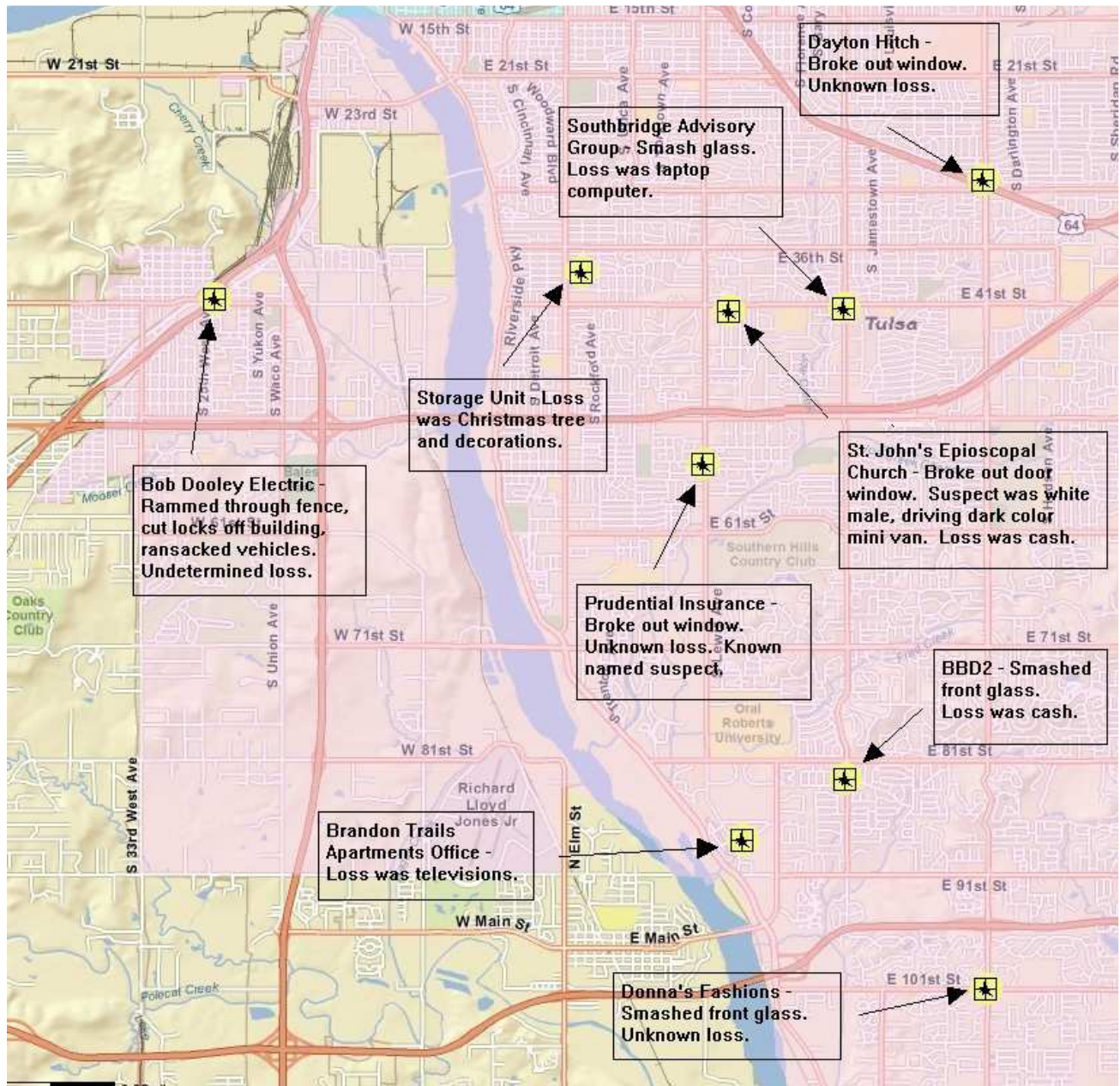
Crime Bulletin: Robbery of Individual



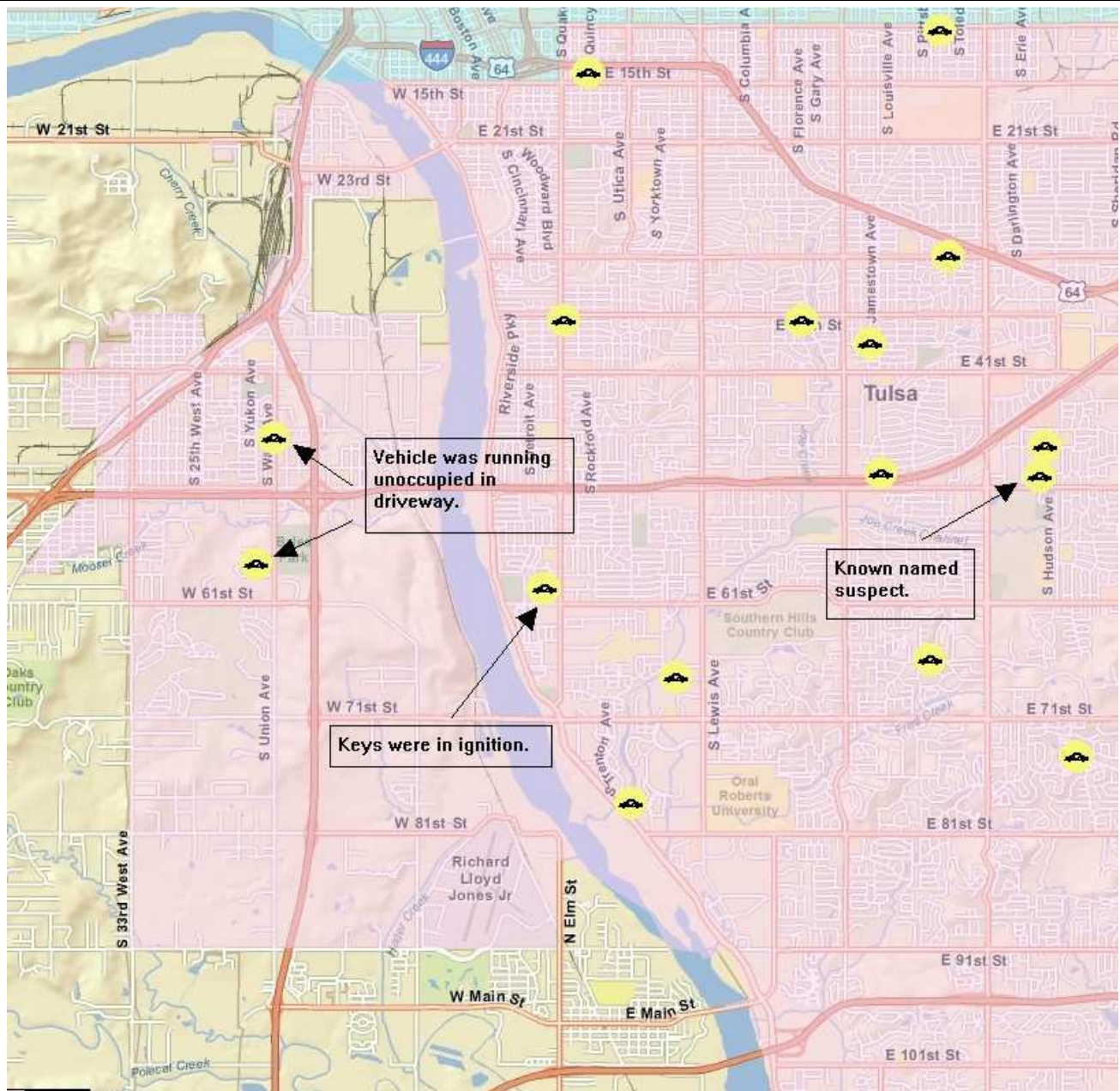
Crime Bulletin: Commercial Robbery



Crime Bulletin: Commercial Burglary



Crime Bulletin: Auto Theft



Of the 16 auto thefts reported, 8 were of vehicles over 15 years old. 5 of the theft were Chevrolet or GMC pickups. 2 thefts occurred during the daytime. The others all occurred at night.